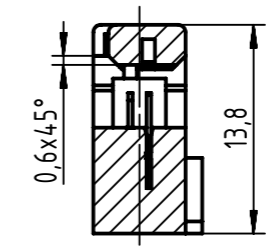


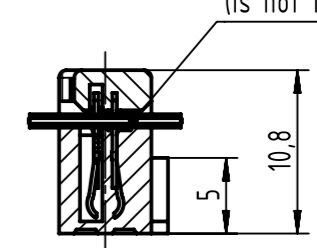
pre-assembled

A-A



assembled

B-B



flat cable  
AWG 26/7 - 28/7  
(is not in scope of delivery)

coding style table


	style A: for connectors 6-pole
	style B: for connectors from 10 to 14-pole
	style C: for connectors from 16 to 64-pole

full range of P/N's and  
dimensions shown on page 2/2

further information see product data sheet

	All Dimensions in mm Original Size DIN A3	Scale 2:1	Free size tol. IEC 60603-13	Ref. Sub.
	All rights reserved Department EL PD	Created by TADJE	Inspected by STORCK	Standardisation HOFFMANN
HARTING Electronics GmbH D-32339 Espelkamp	Title SEK 18 female connector with open end cover	Date 2020-05-05	State Final Release	Doc-Key / ECM-Nr. 100662934/UGD/001/C 500000172195
	Type TB	Number 09185XXX803	Rev. C	Page 1/2

		performance level			dimensions								
		PL3	PL2	S4 (NM30)									
no. of contacts	part number	part number	part number	insulator colour	remark	quantity	A max.	B	C	D			
06	09 18 506 7803	09 18 506 6803	09 18 506 5803	grey	-		12,2	2 x 2,54 (=5,08)	2	7,62			
10	09 18 510 7803	09 18 510 6803	09 18 510 5803				17,3	4 x 2,54 (=10,16)	3,8	12,7			
14	09 18 514 7803	09 18 514 6803	09 18 514 5803				22,4	6 x 2,54 (=15,24)	3,8	17,78			
16	09 18 516 7803	09 18 516 6803	09 18 516 5803				24,9	7 x 2,54 (=17,78)	3,8	20,32			
20	09 18 520 7803	09 18 520 6803	09 18 520 5803				30	9 x 2,54 (=22,86)	3,8	25,4			
26	09 18 526 7803	09 18 526 6803	09 18 526 5803				37,6	12 x 2,54 (=30,48)	3,8	33,02			
30	09 18 530 7803	09 18 530 6803	09 18 530 5803				42,7	14 x 2,54 (=35,56)	3,8	38,50			
34	09 18 534 7803	09 18 534 6803	09 18 534 5803				47,8	16 x 2,54 (=40,64)	3,8	43,18			
40	09 18 540 7803	09 18 540 6803	09 18 540 5803				55,4	19 x 2,54 (=48,26)	3,8	50,8			
50	09 18 550 7803	09 18 550 6803	09 18 550 5803				68,1	24 x 2,54 (=60,96)	3,8	63,5			
60	09 18 560 7803	09 18 560 6803	09 18 560 5803				80,8	29 x 2,54 (=73,66)	3,8	76,6			
64	09 18 564 7803	09 18 564 6803	09 18 564 5803				85,9	31 x 2,54 (=78,74)	3,8	81,28			
06	09 18 506 7803 001	09 18 506 6803 001	09 18 506 5803 001				black	-		12,2	2 x 2,54 (=5,08)	2	7,62
10	09 18 510 7803 001	09 18 510 6803 001	09 18 510 5803 001							17,3	4 x 2,54 (=10,16)	3,8	12,7
14	09 18 514 7803 001	09 18 514 6803 001	09 18 514 5803 001	22,4	6 x 2,54 (=15,24)	3,8				17,78			
16	09 18 516 7803 001	09 18 516 6803 001	09 18 516 5803 001	24,9	7 x 2,54 (=17,78)	3,8				20,32			
20	09 18 520 7803 001	09 18 520 6803 001	09 18 520 5803 001	30	9 x 2,54 (=22,86)	3,8				25,4			
26	09 18 526 7803 001	09 18 526 6803 001	09 18 526 5803 001	37,6	12 x 2,54 (=30,48)	3,8				33,02			
30	09 18 530 7803 001	09 18 530 6803 001	09 18 530 5803 001	42,7	14 x 2,54 (=35,56)	3,8				38,50			
34	09 18 534 7803 001	09 18 534 6803 001	09 18 534 5803 001	47,8	16 x 2,54 (=40,64)	3,8				43,18			
40	09 18 540 7803 001	09 18 540 6803 001	09 18 540 5803 001	55,4	19 x 2,54 (=48,26)	3,8				50,8			
50	09 18 550 7803 001	09 18 550 6803 001	09 18 550 5803 001	68,1	24 x 2,54 (=60,96)	3,8				63,5			
60	09 18 560 7803 001	09 18 560 6803 001	09 18 560 5803 001	80,8	29 x 2,54 (=73,66)	3,8				76,6			
64	09 18 564 7803 001	09 18 564 6803 001	09 18 564 5803 001	85,9	31 x 2,54 (=78,74)	3,8				81,28			
06	09 18 506 7803 58U	09 18 506 6803 58U	09 18 506 5803 58U	grey	bulk packaging	5000 pieces				12,2	2 x 2,54 (=5,08)	2	7,62
10	09 18 510 7803 58U	09 18 510 6803 58U	09 18 510 5803 58U			5000 pieces				17,3	4 x 2,54 (=10,16)	3,8	12,7
14	09 18 514 7803 58U	09 18 514 6803 58U	09 18 514 5803 58U			5000 pieces	22,4	6 x 2,54 (=15,24)	3,8	17,78			
16	09 18 516 7803 58U	09 18 516 6803 58U	09 18 516 5803 58U			5000 pieces	24,9	7 x 2,54 (=17,78)	3,8	20,32			
20	09 18 520 7803 58U	09 18 520 6803 58U	09 18 520 5803 58U			5000 pieces	30	9 x 2,54 (=22,86)	3,8	25,4			
26	09 18 526 7803 58U	09 18 526 6803 58U	09 18 526 5803 58U			5000 pieces	37,6	12 x 2,54 (=30,48)	3,8	33,02			
30	09 18 530 7803 58U	09 18 530 6803 58U	09 18 530 5803 58U			5000 pieces	42,7	14 x 2,54 (=35,56)	3,8	38,50			
34	09 18 534 7803 58U	09 18 534 6803 58U	09 18 534 5803 58U			3000 pieces	47,8	16 x 2,54 (=40,64)	3,8	43,18			
40	09 18 540 7803 58U	09 18 540 6803 58U	09 18 540 5803 58U			3000 pieces	55,4	19 x 2,54 (=48,26)	3,8	50,8			

	All rights reserved	Created by TADJE	Inspected by STORCK	Standardisation HOFFMANN	Date 2020-05-05	State Final Release	Ref.
	Department EL PD	Title SEK 18 female connector with open end cover				Doc-Key / ECM-Nr. 100662934/UGD/001/C 500000172195	
HARTING Electronics GmbH D-32339 Espelkamp		Type TB	Number 09185XXX803		Rev. C	Page 2/2	